



TASMANIAN STATISTICAL INDICATORS

EMBARGO: 11:30AM (CANBERRA TIME) MON 10 AUG 1998

CONTENTS

	<i>page</i>
COMMENTARY	v
SUBJECT AREAS	
1 Population and Demography	1
2 Labour force	2
3 Wages and prices	10
4 Production	15
5 Primary industry	16
6 Building	20
7 Finance	21
8 Tourism	22
9 Transport	24
10 Retail trade	24
11 Australia and State comparisons	25
12 Tasmanian Statistical Divisions, Comparisons	26
ADDITIONAL INFORMATION	
Explanatory notes	27
Map: Tasmanian Statistical Divisions	28

- For more information about these and related statistics, contact Information Services on 03 6222 5800 or refer to the back cover of this publication.

**TASMANIAN STATISTICAL INDICATORS
AUGUST 1998**

**Denis W. Rogers
Regional Director, Tasmania**

CONTENTS

	Page
MAIN FEATURES	v
TABLES	
1 Population	1
2 Births, deaths and marriages registered	1
3 Labour force status	2
4 Labour force status by region, males	3
5 Labour force status by region, females	4
6 Labour force status by region, persons	5
7 Teenage labour market	6
8 All employed persons by occupation	7
9 Employed wage and salary earners, sector and industry	8
10 Average hours worked	8
11 Job vacancies	9
12 Industrial disputes	9
13 Average weekly earnings of employees	10
14 Indexes of total hourly rates of pay	10
15 Summary of annual movements in wages and prices	11
16 House price index numbers, Hobart	11
17 Consumer price index, Hobart and eight capital cities combined	12
18 Price index of materials used in building other than house building, Hobart	13, 14
19 Production of selected commodities	15
20 Livestock slaughtering: original	16
21 Livestock slaughtering: seasonally adjusted and trend	16
22 Meat production	17
23 Principal mineral concentrates produced	17
24 Sawmills and plywood mills, logs delivered and timber produced	18
25 Chipping and grinding of wood	18
26 Logs delivered for milling or chipping	19
27 Building approvals	20

INQUIRIES

- *for further information about statistics in this publication and the availability of related unpublished statistics, contact the Hobart office of the ABS on (03) 6222 5800.*
 - *for information about other ABS statistics and services, please refer to the back cover of this publication.*
-

28	Secured housing commitments	20
29	Banking statistics	21
30	Private new capital expenditure by type of asset	21
31	Passenger arrivals and departures, Tasmania	22
32	Total passenger arrivals by air and sea, Tasmania	22
33	Accommodation statistics	23
34	Registrations of new motor vehicles	24
35	Turnover of retail establishments at current prices	24
36	Major Statistical Indicators—Australia and State comparisons	25
37	Major Statistical Indicators—Tasmanian Statistical Divisions	26
EXPLANATORY NOTES		27
MAP		
	Tasmanian Statistical Divisions	28

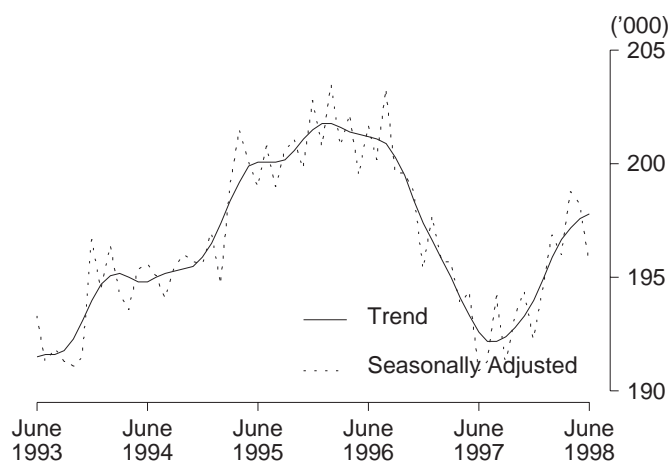
MAIN FEATURES

EMPLOYMENT

State comparisons

Trend estimates The Australian and State *trend* series comparisons are given on page 25. There was an increase of 2.7% in Tasmania's employment over the year to June 1998. The largest percentage increase in employment was in Queensland (3.8%), followed by Western Australia (3.6%) and Victoria (2.9%).

EMPLOYMENT, TASMANIA



Regional comparisons

Original terms In the Hobart and Southern Statistical Divisions the estimate of employment in *original* terms in June 1998 was 96,700, and compares with 94,200 in June 1997. The estimate of employment in the Northern Statistical Division in June 1998 was 53,500 and compares with 53,600 in June 1997. The estimate of employment in the Mersey-Lyell Statistical Division was 44,100 in June 1998, and compares with 41,800 in June 1997. (See tables 4-6, pages 3-5.)

THE LABOUR FORCE

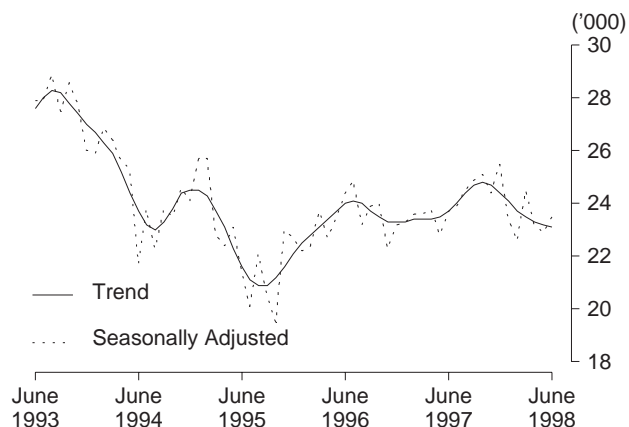
Trend estimates There were an estimated 220,900 persons (based on *trend* estimates) in the labour force in June 1998 and an estimated 368,600 civilian Tasmanians aged 15 years or more, yielding a labour force participation rate of 59.9%. This compares with 58.5% in June 1997.

For males, the *trend* estimate of the participation rate was 69.9%, compared with 69.2% for June 1997. For females, the *trend* estimate of the participation rate was 50.3%, compared with 48.2% in June 1997. (See table 3, page 2.)

UNEMPLOYMENT

Trend estimates The *trend* estimate of the number of unemployed persons in Tasmania for June 1998 was 23,100. This compares with 23,700 for June 1997. The *trend* estimate of the unemployment rate of 10.5% in June 1998 compares with 11.0% in June 1997. (See table 3, page 2.)

UNEMPLOYMENT, TASMANIA



CONSUMER PRICE INDEX The Consumer Price Index All Groups Index for Hobart rose by 0.4% in the June quarter of 1998 and by 0.6% for the year ending June 1998. This compared with an increase of 0.6% for the weighted average of the eight capital cities for the June quarter, and a rise of 0.7% for the year.

All capital cities recorded an increase in the index for the year ending June 1998, with Sydney and Brisbane recording the largest increase at 1.0%. The increase for Darwin was the smallest, at 0.2%.

(See table 17, page 12.)

Source: *Consumer Price Index*, ABS Catalogue No.6401.0.

BUILDING MATERIALS PRICE INDEXES

The price index of materials used in house building in Hobart increased by 0.7% during the June quarter 1998, and by 1.6% during the twelve months ending June 1998. All of the six State capital cities recorded increases over the twelve months ending June, with Sydney recording the highest increase over the period, at 2.9%. The weighted average of the six State capital cities increased by 1.7% over the same period.

For materials used in building other than house building, the price index for Hobart recorded an increase of 1.2% over the year ending June 1998. All of the other State capitals recorded increases with the exception of Perth, which fell by 0.9%. Sydney and Adelaide recorded the highest increase at 0.8%. The index for the weighted average of the six State capital cities increased by 0.5% over the same period.

Components in Hobart's price index of materials other than house building that recorded the largest increases over the year ending June 1998 were paint and other coatings (up 4.1%), structural timber (up 3.2%) and clay bricks (up 2.9%). These rises were partly offset by falls in the prices of steel decking, cladding etc. (down 3.8%), non-ferrous pipes & fittings (down 2.8%) and sand & aggregate (down 1.8%). (See table 15, page 11 and table 18, page 13.)

Source: *Price Index of Materials used in House Building*
ABS Catalogue No. 6408.0

Price Index of Materials used in Building other than House Building
ABS Catalogue No. 6407.0

BUILDING APPROVALS

Original terms There were 128 dwelling units approved during May 1998 in Tasmania. This was 3.8% below the March 1998 figure of 133 and 12.9% below the May 1997 figure of 147. For the twelve months ended May 1998 there were 1,654 new dwelling units approved, 14.7% below the 1,938 units recorded for the twelve months ended May 1997.

The value of new residential buildings approved, at current prices, in May 1998 was \$14.5 million, 4.3% above the April 1998 figure and 6.5% below the May 1997 figure. The value of all building approved, at current prices, in May 1998 was \$29.0 million, 29.6% above the April 1998 figure and 13.5% below the May 1997 figure. (See table 27, page 20.)

HOUSING FINANCE

Trend estimates The *trend* estimate for the number of new secured housing finance commitments entered into in Tasmania in May 1998 was 783 dwellings, a decrease from the previous month's figure of 796, and lower than the May 1997 figure of 809.

The value of new commitments in May 1998 was \$57 million, a fall of 3.4% from the previous month's figure of \$59 million. The May 1998 value was also down from the May 1997 figure, when the value of commencements was \$58 million.

Nationally, the total number of secured housing commitments entered into in May 1998 was 40,256, an increase from the previous month's figure of 40,100. The value of these commitments decreased between April 1998 and May 1998 from \$4,502 million to \$4,489 million. (See table 28, page 20.)

LIVESTOCK SLAUGHTERING

Trend estimates In May 1998, the *trend* estimate for the slaughtering of cattle and calves in Tasmania was 1.6% higher than the previous month. Over the same period, the number of sheep and lambs slaughtered fell by 1.5% and the number of pigs slaughtered fell, by 0.7% to just over 6,000.

In May 1998, the *trend* estimate of the number of cattle and calves slaughtered was 25,900 which was 12.0% above the number slaughtered in May 1997 and 38.6% above the *trend* estimate for May 1996.

The *trend* estimate for the slaughtering of sheep and lambs was 72,200 in May 1998, which was 5.7% above the number slaughtered in May 1997 and 25.1% above the *trend* estimate for May 1996.

The *trend* estimate of 6,100 pigs slaughtered in May 1998 was 7.1% below the number slaughtered in May 1997 and 12.0% below the *trend* estimate for May 1996. (See table 21, page 16.)

NEW MOTOR VEHICLE REGISTRATIONS

Original terms There were 1,242 new motor vehicles (excluding motorcycles) registered in Tasmania during May 1998. This was 20.2% above the 1,033 registered in April 1998 and 2.6% above the figure for May 1997 (1,211). Of the new motor vehicles (excluding motorcycles) registered in May 1998 in Tasmania, 3 were vehicles registered by vehicle rental businesses compared with 6 registered by vehicle rental businesses in April 1998 and 6 in May 1997. (See table 34, page 24.)

RETAIL

Original terms In *original* terms, the estimate of retail turnover in Australia for May 1998 was \$11,207.8 million, 2.5% above the figure recorded in May 1997. In *original* terms, the estimate of retail turnover in Tasmania for May 1998 was \$259.5 million, 1.6% below the figure recorded in May 1997.

Trend estimates The *trend* estimate of retail turnover in Australia for May 1998 was \$11,366.1 million, 4.2% above the figure recorded in May 1997. The *trend* estimate of retail turnover in Tasmania for May 1998 was \$261.1 million, 0.2% below the figure recorded in May 1997. (See table 35, page 24.)

1

POPULATION: Original

Year or quarter	Estimated resident population at end of period	Natural increase ¹	Net estimated migration gain	Total population growth	Annual growth rate ²
	'000	'000	'000	'000	%
Year ended 30 June					
1993	471.7	3.1	- 1.4	1.8	0.39
1994	473.0	3.1	- 1.9	1.3	0.27
1995	473.7	3.0	- 2.3	0.7	0.16
1996	474.4	2.5	- 2.2	0.8	0.16
1997 p	473.5	2.4	- 3.4	- 0.9	- 0.20
Quarter					
1996					
March	474.2	0.7	- 0.8	0.1	0.11
June	474.4	0.5	- 0.4	0.3	0.16
September p	474.5	0.6	- 0.5	0.0	0.10
December p	474.1	0.6	- 1.1	- 0.4	- 0.01
1997					
March p	473.6	0.7	- 1.1	- 0.5	- 0.13
June p	473.5	0.6	- 0.7	- 0.1	- 0.20
September p	472.7	0.5	- 1.3	- 0.8	- 0.37
December p	471.8	0.5	- 1.5	- 0.9	- 0.48

¹ Excess of live births registered over deaths registered (based on usual State of residence).

² Percentage growth from same quarter in previous year.

(Source: Australian Demographic Statistics, ABS catalogue number 3101.0)

2

BIRTHS, DEATHS AND MARRIAGES (BY STATE OF USUAL RESIDENCE)¹: Original

Year or quarter	Births		Deaths		Infant mortality ²		Marriages	
	No.	Rate ³	No.	Rate ⁴	Deaths	Rate ⁵	No.	Rate ⁶
Year ended 31 December								
1992	6 996	1.949	3 742	7.6	50	7.1	3 081	6.6
1993	6 816	1.915	3 632	7.2	35	5.1	3 055	6.5
1994	6 883	1.958	3 909	7.6	50	7.3	2 887	6.1
1995	6 560	1.889	3 749	7.1	38	5.8	2 840	6.0
1996	6 236	1.890	3 803	7.1	28	4.5	2 654	5.6
1997	6 023	1.799	3 783	6.8	34	5.6	2 668	5.6
Quarter								
1996								
March	1 593	..	880	..	8	5.0	858	..
June	1 490	..	979	..	9	6.0	789	..
September	1 607	..	1 039	..	8	5.0	349	..
December	1 546	..	905	..	3	1.9	658	..
1997								
March p	1 524	..	864	..	6	3.9	896	..
June p	1 546	..	973	..	9	5.8	600	..
September p	1 563	..	1 095	..	12	7.7	554	..
December p	1 390	..	851	..	7	5.0	618	..

¹ From this issue births and deaths data in this table will be by state of usual residence (Tasmania).

² Deaths of children under one year of age.

³ Total fertility rate. The sum of age-specific fertility rates (live births at each age of mother per female population of that age). It represents the number of children a woman would bear during her lifetime if she experienced current age-specific fertility rates at each age of her reproductive life.

⁴ Standardised death rate. The overall death rate, per 1,000 persons, that would have prevailed in a standard population if it had experienced at each age the death rates of the population being studied. The standard population used in these calculations is all persons in the 1991 Australian population.

⁵ Rate per 1,000 live births.

⁶ Crude marriage rate is the number of marriages registered during the calendar year, per 1,000 estimated resident population at 30 June of that year.

(Source: Australian Demographic Statistics, ABS catalogue number 3101.0)

3

LABOUR FORCE STATUS¹: **Seasonally adjusted and trend**

Month	Seasonally adjusted series ²				Trend series ²			
	Employed	Unemployed	Unemployment rate	Participation rate	Employed	Unemployed	Unemployment rate	Participation rate
	'000	'000	%	%	'000	'000	%	%
MALES								
1997								
June	110.9	13.8	11.1	68.6	111.7	14.2	11.3	69.2
July	110.9	15.2	12.1	69.4	111.8	14.2	11.3	69.3
August	112.5	14.5	11.4	69.8	111.9	14.5	11.5	69.5
September	112.7	13.5	10.7	69.4	112.0	14.8	11.7	69.7
October	112.4	15.6	12.2	70.4	111.9	15.2	12.0	69.9
November	111.9	15.6	12.3	70.2	111.7	15.5	12.2	70.0
December	109.9	16.9	13.3	69.7	111.6	15.7	12.3	70.0
1998								
January	112.2	15.2	11.9	70.1	111.6	15.7	12.3	70.1
February	112.0	14.7	11.6	69.8	111.8	15.5	12.2	70.1
March	111.2	16.1	12.6	70.1	112.0	15.2	12.0	70.1
April	113.5	14.8	11.6	70.7	112.1	15.0	11.8	70.1
May	112.8	14.4	11.3	70.2	112.1	14.8	11.6	70.0
June	110.3	14.7	11.7	69.0	112.1	14.6	11.5	69.9
FEMALES								
1997								
June	80.0	9.9	11.0	47.8	81.0	9.5	10.5	48.2
July	80.5	8.7	9.7	47.4	80.5	9.8	10.8	48.0
August	81.7	10.0	10.9	48.8	80.3	9.9	11.0	48.0
September	78.5	11.4	12.7	47.8	80.4	9.9	10.9	48.0
October	80.9	9.5	10.5	48.1	80.9	9.6	10.6	48.1
November	82.5	8.8	9.6	48.6	81.6	9.2	10.1	48.3
December	82.5	8.6	9.4	48.4	82.4	8.7	9.6	48.5
1998								
January	82.3	8.2	9.1	48.2	83.3	8.4	9.1	48.8
February	84.8	7.9	8.5	49.4	84.1	8.2	8.9	49.1
March	84.8	8.4	9.0	49.7	84.6	8.3	8.9	49.5
April	85.3	8.4	8.9	50.0	85.1	8.4	8.9	49.8
May	85.4	8.5	9.0	50.1	85.5	8.5	9.0	50.1
June	85.4	8.8	9.3	50.3	85.8	8.6	9.1	50.3
TOTAL								
1997								
June	190.9	23.7	11.0	58.1	192.6	23.7	11.0	58.5
July	191.3	23.9	11.1	58.2	192.2	24.0	11.1	58.5
August	194.2	24.5	11.2	59.1	192.2	24.4	11.3	58.6
September	191.2	24.9	11.5	58.4	192.4	24.7	11.4	58.7
October	193.3	25.1	11.5	59.1	192.8	24.8	11.4	58.8
November	194.4	24.4	11.2	59.2	193.3	24.7	11.3	59.0
December	192.3	25.5	11.7	58.9	194.0	24.4	11.2	59.1
1998								
January	194.5	23.4	10.8	59.0	194.9	24.1	11.0	59.3
February	196.9	22.6	10.3	59.4	195.9	23.7	10.8	59.4
March	196.0	24.5	11.1	59.7	196.7	23.5	10.7	59.6
April	198.8	23.2	10.5	60.2	197.2	23.3	10.6	59.8
May	198.2	22.9	10.4	60.0	197.6	23.2	10.5	59.9
June	195.7	23.5	10.7	59.5	197.8	23.1	10.5	59.9

¹ For explanation of terms and concepts, refer to *Labour Force, Australia*, ABS catalogue number 6203.0.

² Seasonal factors are reviewed annually to take account of each additional year's original data. The results of the review are used to compile revised seasonally adjusted and trend estimates each February. Trend estimates for the most recent months are also revised each month; see Explanatory Notes. (Source: *Labour Force Australia*, ABS catalogue number 6203.0)

4

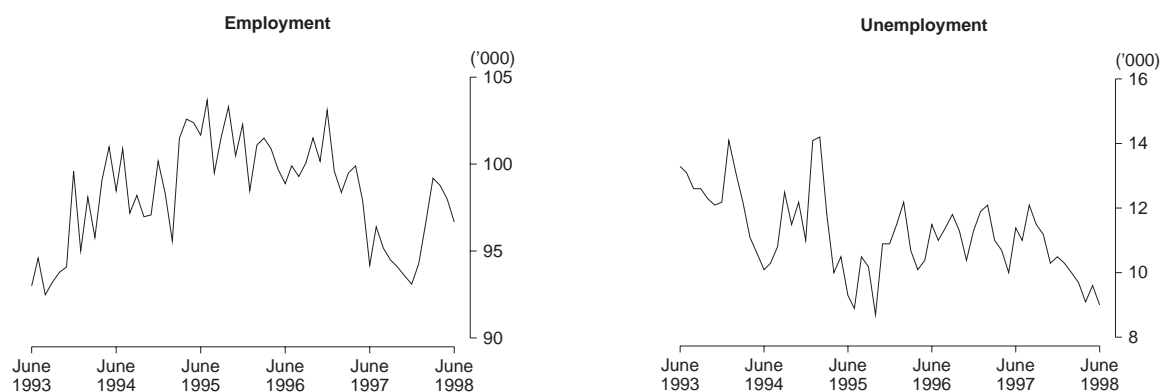
LABOUR FORCE STATUS BY REGION, MALES^{1, 2}: **Original**

Month		Total employed	Total unemployed	Unemployment rate	Participation rate
		'000	'000	%	%
HOBART AND SOUTHERN STATISTICAL DIVISIONS					
1995	June	56.5	6.6	10.4	71.2
1997	June	52.8	6.9	11.5	66.2
1998	April	55.3	6.1	9.9	69.6
	May	54.3	5.6	9.3	68.2
	June	53.5	5.8	9.7	67.4
NORTHERN STATISTICAL DIVISION					
1995	June	31.9	4.2	11.7	71.6
1997	June	32.4	4.3	11.7	70.1
1998	April	31.8	4.8	13.1	71.1
	May	31.5	4.3	12.0	70.3
	June	30.0	5.3	15.1	70.3
MERSEY-LYELL STATISTICAL DIVISION					
1995	June	24.3	3.6	12.9	67.5
1997	June	24.9	2.6	9.4	70.0
1998	April	26.7	3.7	12.1	72.7
	May	27.3	3.7	11.9	72.8
	June	25.9	3.5	12.0	68.4
TASMANIA					
1995	June	112.8	14.4	11.3	70.5
1997	June	110.0	13.7	11.1	68.1
1998	April	113.9	14.5	11.3	70.7
	May	113.2	13.5	10.7	69.9
	June	109.4	14.6	11.8	68.5

¹ For explanation of terms and concepts, refer to *Labour Force, Australia*, ABS catalogue number 6203.0.

² Data in this table are original series, i.e. they are not part of a seasonally adjusted or a trend series. Accordingly, care should be exercised when using these data. New monthly data from each quarter (March, June, September and December) are published two months after the quarter. (Source: *Labour Force, Selected Summary Tables, Australia*, ABS catalogue number 6291.0.40.001.)

Hobart and Southern Statistical Divisions—Persons: **Original** (see Table 6.)



5

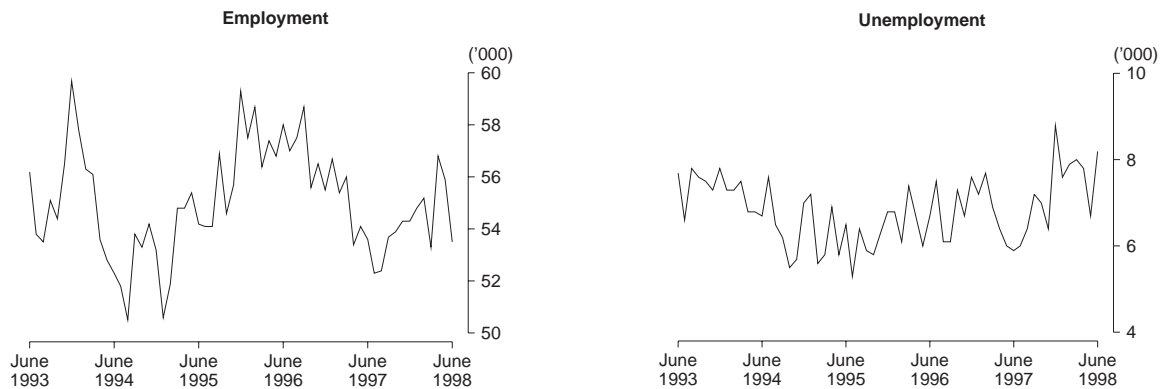
LABOUR FORCE STATUS BY REGION, FEMALES^{1, 2}: Original

Month		Total employed '000	Total unemployed '000	Unemployment rate %	Participation rate %
HOBART AND SOUTHERN STATISTICAL DIVISIONS					
1995	June	45.1	2.7	5.6	51.6
1997	June	41.4	4.6	9.9	49.1
1998	April	43.5	3.1	6.6	51.5
	May	43.7	4.1	8.5	52.5
	June	43.2	3.3	7.0	51.4
NORTHERN STATISTICAL DIVISION					
1995	June	22.3	2.2	9.2	46.7
1997	June	21.2	1.6	6.8	43.8
1998	April	25.0	3.0	10.8	51.1
	May	24.4	2.4	9.0	50.0
	June	23.4	2.8	10.8	49.4
MERSEY-LYELL STATISTICAL DIVISION					
1995	June	18.2	1.8	9.1	48.4
1997	June	16.9	2.9	14.7	46.9
1998	April	18.0	1.7	8.4	46.3
	May	18.5	1.6	7.8	46.6
	June	18.2	1.9	9.6	46.0
TASMANIA					
1995	June	85.6	6.7	7.3	49.5
1997	June	79.5	9.0	10.2	47.1
1998	April	86.5	7.7	8.2	50.2
	May	86.6	8.0	8.5	50.5
	June	84.9	8.0	8.6	49.6

¹ For explanation of terms and concepts, refer to *Labour Force, Australia*, ABS catalogue number 6203.0.

² Data in this table are original series, i.e. they are not part of a seasonally adjusted or a trend series. Accordingly, care should be exercised when using these data. New monthly data from each quarter (March, June, September and December) are published two months after the quarter. (Source: *Labour Force, Selected Summary Tables, Australia*, ABS catalogue number 6291.0.40.001.)

Northern Statistical Division—Persons: **Original** (see Table 6.)



6

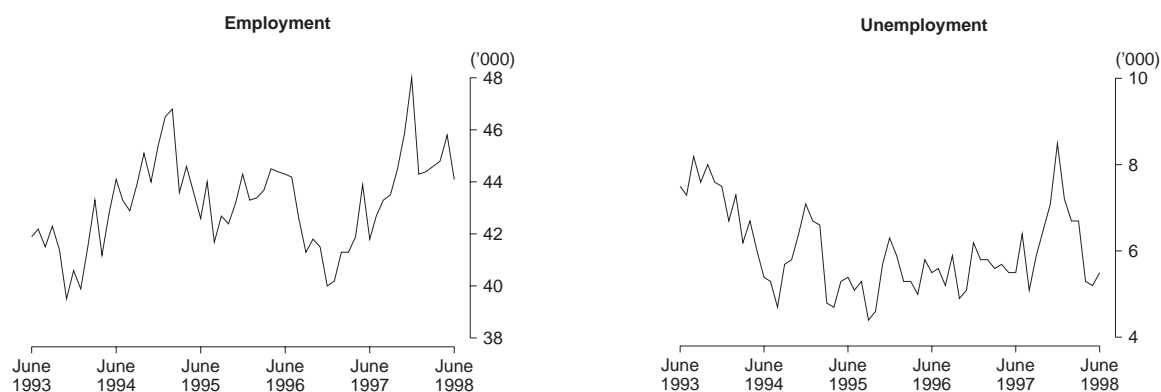
LABOUR FORCE STATUS BY REGION, PERSONS^{1, 2}: **Original**

Month		Total employed '000	Total unemployed '000	Unemployment rate %	Participation rate %
HOBART AND SOUTHERN STATISTICAL DIVISIONS					
1995	June	101.7	9.3	8.3	61.2
1997	June	94.2	11.4	10.8	51.5
1998	April	98.8	9.1	8.4	60.5
	May	98.0	9.6	8.9	60.2
	June	96.7	9.0	8.5	59.3
NORTHERN STATISTICAL DIVISION					
1995	June	54.2	6.5	10.7	58.9
1997	June	53.6	5.9	9.9	57.0
1998	April	56.8	7.8	12.1	60.8
	May	55.9	6.7	10.7	59.9
	June	53.5	8.2	13.2	59.6
MERSEY-LYELL STATISTICAL DIVISION					
1995	June	42.6	5.4	11.3	57.9
1997	June	41.8	5.5	11.6	58.0
1998	April	44.8	5.3	10.6	59.4
	May	45.8	5.2	10.3	59.6
	June	44.1	5.5	11.0	57.1
TASMANIA					
1995	June	198.4	21.1	9.6	59.8
1997	June	189.6	22.8	10.7	57.5
1998	April	200.3	22.2	10.0	60.3
	May	199.8	21.6	9.7	60.0
	June	194.3	22.7	10.4	58.9

¹ For explanation of terms and concepts, refer to *Labour Force, Australia*, ABS catalogue number 6203.0.

² Data in this table are original series, i.e. they are not part of a seasonally adjusted or a trend series. Accordingly, care should be exercised when using these data. New monthly data from each quarter (March, June, September and December) are published two months after the quarter. (Source: *Labour Force, Selected Summary Tables, Australia*, ABS catalogue number 6291.0.40.001.)

Mersey-Lyell Statistical Division—Persons: **Original** (see Table 6.)



7

TEENAGE LABOUR MARKET^{1, 2}: Original

Month	Employed		Unemployed		Labour force	Not in labour force	Civilian population aged 15-19	Unemployment rate	Unemployment population ratio	Participation rate
	Full-time	Total	Looking for full-time work	Total						
	'000	'000	'000	'000	'000	'000	'000	%	%	%
ATTENDING NEITHER SCHOOL NOR A TERTIARY INSTITUTION FULL-TIME										
1995 June	7.0	9.8	3.1	3.3	13.0	0.4	13.4	25.0	24.6	97.0
1997 June	5.3	7.6	3.1	3.1	10.8	2.4	13.2	29.1	23.8	82.0
1998 April	6.6	9.3	2.0	2.1	11.4	1.0	12.4	18.6	17.1	92.1
May	6.9	9.3	2.4	2.5	11.8	1.1	12.9	21.1	19.3	91.5
June	6.4	9.3	2.1	2.1	11.4	0.6	12.0	18.8	17.9	95.4
ATTENDING SCHOOL OR A TERTIARY INSTITUTION FULL-TIME										
1995 June	0.3	5.6	0.2	1.9	7.4	13.1	20.6	25.7	9.2	35.9
1997 June	0.2	5.2	0.3	2.2	7.3	13.9	21.2	29.7	10.2	34.5
1998 April	0.0	6.9	0.3	1.8	8.7	13.4	22.1	21.0	8.3	39.4
May	0.0	6.5	0.3	1.5	7.9	13.7	21.6	18.3	6.7	36.7
June	0.1	6.8	0.3	1.5	8.3	14.1	22.5	18.1	6.7	36.9
TOTAL										
1995 June	7.3	15.3	3.3	5.1	20.5	13.5	34.0	25.0	15.0	60.2
1997 June	5.5	12.8	3.3	5.3	18.1	16.3	34.4	29.3	15.4	52.7
1998 April	6.6	16.2	2.3	3.9	20.1	14.4	34.5	19.6	11.5	58.4
May	6.9	15.8	2.7	3.9	19.7	14.7	34.5	20.0	11.4	57.2
June	6.5	16.1	2.4	3.6	19.7	14.7	34.5	18.2	10.4	57.2

¹ Persons aged 15-19 years.

² For explanation of terms and concepts, refer to *Labour Force, Australia*, ABS catalogue number 6203.0.

(Source: *Labour Force, Teenage Employment and Unemployment, Australia*, ABS catalogue number 6202.0.40.001.)

8

ALL EMPLOYED PERSONS BY OCCUPATION^{1, 2}: Original

Occupation	May 1997	May 1998		Proportion of total employed		
	Persons	Males	Females	Persons	May 1997	May 1998
	'000	'000	'000	'000	%	%
Managers and administrators	11.2	8.6	2.8	11.4	5.7	5.7
Generalist managers	1.7	1.1	0.1	1.1	0.9	0.6
Specialist managers	3.6	3.0	0.9	3.9	1.8	2.0
Farmers and farm managers	5.9	4.5	1.9	6.3	3.0	3.2
Professionals	31.7	15.3	15.8	31.0	16.2	15.5
Science, building and engineering professionals	3.5	2.7	0.6	3.4	1.8	1.7
Business and information professionals	5.8	3.5	2.0	5.5	3.0	2.8
Health professionals	8.8	1.9	6.2	8.0	4.5	4.0
Education professionals	8.2	4.0	5.0	9.0	4.2	4.5
Social, arts and miscellaneous professionals	5.5	3.1	2.0	5.1	2.8	2.6
Associate professionals	18.4	13.4	5.7	19.1	9.4	9.6
Science, engineering and related associate professionals	3.0	1.9	0.2	2.1	1.5	1.1
Business and administration associate professionals	3.3	3.3	1.0	4.2	1.7	2.1
Managing supervisors (sales and service)	7.7	6.6	3.2	9.8	3.9	4.9
Other associate professionals	4.3	1.7	1.3	3.0	2.2	1.5
Tradespersons and related workers	25.4	23.3	3.6	27.0	13.0	13.5
Mechanical and fabrication engineering tradespersons	5.8	5.4	0.1	5.5	3.0	2.8
Automotive tradespersons	3.0	2.8	0.0	2.8	1.5	1.4
Electrical and electronics tradespersons	3.6	3.5	0.0	3.5	1.8	1.8
Construction Tradespersons	5.8	5.3	0.0	5.3	3.0	2.7
Other tradespersons and related workers	7.1	6.4	3.5	10.0	3.6	5.0
Advanced clerks and service workers	3.9	0.8	3.3	4.1	2.0	2.1
Secretaries and personal assistants	1.9	0.1	2.2	2.2	1.0	1.1
Other advanced clerical and service workers	2.0	0.8	1.1	1.9	1.0	1.0
Intermediate clerical, sales and service workers	39.5	10.8	30.2	40.9	20.2	20.5
Intermediate clerical workers	24.1	5.6	17.7	23.3	12.3	11.7
Intermediate sales and related workers	2.8	2.3	0.7	3.0	1.4	1.5
Intermediate service workers	12.6	2.8	11.8	14.6	6.4	7.3
Intermediate production and transport workers	19.3	18.4	1.8	20.2	9.9	10.1
Intermediate plant operators	7.4	6.2	0.0	6.2	3.8	3.1
Intermediate machine operators	2.0	1.7	0.6	2.3	1.0	1.2
Road and rail transport drivers	5.6	6.5	0.5	7.0	2.9	3.5
Other intermediate production and transport workers	4.4	4.0	0.7	4.7	2.2	2.4
Elementary clerical, sales and service workers	25.4	8.4	14.9	23.3	13.0	11.7
Elementary clerks	3.8	0.9	0.8	1.7	1.9	0.9
Elementary sales workers	19.4	6.2	12.8	19.0	9.9	9.5
Elementary service workers	2.1	1.3	1.3	2.6	1.1	1.3
Labourers and related workers	21.1	14.2	8.6	22.8	10.8	11.4
Cleaners	5.5	1.8	3.9	5.7	2.8	2.9
Factory labourers	4.3	4.8	2.1	6.9	2.2	3.5
Other labourers and related workers	11.3	7.6	2.5	10.1	5.8	5.1
Total employed	195.9	113.2	86.6	199.8	100.0	100.0

¹ From August 1997, revisions to the Australian Standard Classification of Occupations (ASCO) have resulted in changes to this table.

² For explanation of terms and concepts, refer to *Labour Force, Australia*, ABS catalogue number 6203.0. (Source: Labour Force Estimates—unpublished data.)

9

EMPLOYED WAGE AND SALARY EARNERS, SECTOR AND INDUSTRY¹: Original

Industry	Employees, November 1997			Percentage distribution	
	Private No. ('000)	Public No. ('000)	Private and public No. ('000)	November 1995	November 1997
Agriculture, forestry, & fishing	n.a.	0.6	0.6	0.4	0.4
Mining	1.6	—	1.6	1.6	1.0
Manufacturing	21.5	0.1	21.6	13.9	13.8
Electricity, gas & water, Construction	4.6	2.2	6.7	6.3	4.3
Wholesale & Retail trade	29.9	—	29.9	19.8	19.1
Accommodation, cafes & restaurants	10.8	—	10.8	6.6	6.9
Transport & storage	4.6	1.1	5.7	3.1	3.6
Communication services	0.5	2.1	2.6	1.6	1.7
Finance, insurance, Property & business services	16.0	1.0	17.0	9.8	10.9
Education	3.8	14.3	18.1	10.5	11.6
Government administration and defence	—	9.7	9.7	7.1	6.2
Health and community services	14.6	8.9	23.5	14.1	15.0
Cultural, recreational, Personal and other services	6.1	2.5	8.7	5.3	5.6
Total all industries	114.3	42.3	156.6	100.0	100.0

¹ For explanation of terms and concepts, refer to *Employed Wage and Salary Earners, Australia*, catalogue number 6248.0. (Source: *Employed Wage and Salary Earners*, ABS catalogue number 6248.0.)

10

AVERAGE HOURS WORKED: Original

Month	Average weekly total hours worked, all employed persons ¹			Average weekly overtime hours ²		Percentage of employees working overtime
	Males	Females	Persons	Per employee	Per employee working overtime	
1997						
February	38.0	26.2	33.1	0.9	6.6	13.6
May	39.4	27.8	34.4	0.8	5.9	13.3
August	38.4	26.8	33.5	0.7	6.5	11.0
November	38.7	26.8	33.6	0.6	6.3	9.2
1998						
February	37.8	26.1	32.8	0.7	6.7	9.8
May	39.1	27.5	34.1	0.7	7.1	10.1

¹ For explanation of terms and concepts, refer to *Labour Force, Australia*, ABS catalogue number 6203.0.

² For explanation of terms and concepts, refer to *Job Vacancies and Overtime, Australia*, ABS catalogue number 6354.0. (Source: *Job Vacancies and Overtime, Australia*, ABS catalogue number 6354.0 and unpublished data.)

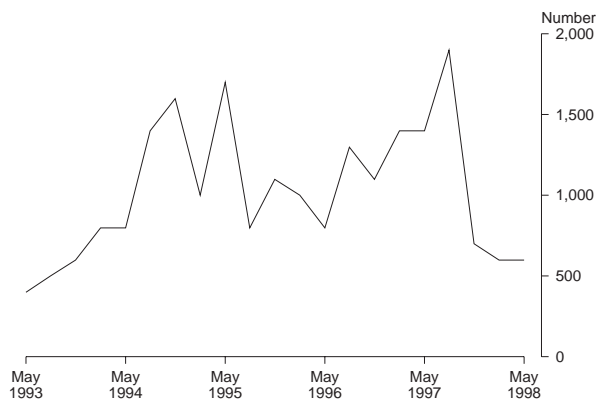
11 JOB VACANCIES¹: Original

Period	Number '000	Rate ² %
1997		
February	1.4	1.0
May	1.4	1.0
August	1.9	1.4
November	0.7	0.5
1998		
February	0.6	0.4
May	0.6	0.4

¹ For explanation of terms and concepts refer to *Job Vacancies and Overtime, Australia*, catalogue number 6354.0.

² Job vacancies are expressed as a percentage of the number of job vacancies divided by the number of employees plus job vacancies.

JOB VACANCIES: Original



12 INDUSTRIAL DISPUTES¹: Original

Month	Working days lost '000	Twelve months ending	Working days lost per thousand employees no.
1997			
March	0.0	March	73
April	0.0	April	73
May	1.4	May	81
June	0.0	June	79
July	3.7	July	75
August	0.0	August	43
September	0.3	September	36
October	0.1	October	36
November	0.1	November	35
December	0.0	December	35
1998			
January	0.0	January	35
February	0.0	February	35
March	0.0	March	35
Twelve months ended 1998			
March	5.6		

¹ For explanation of terms and concepts, refer to *Industrial Disputes, Australia*, ABS catalogue number 6321.0.

13

AVERAGE WEEKLY EARNINGS OF EMPLOYEES¹: Original and trend

Survey reference period	Full-time adult males		All males	Full-time adult females		All females	Full-time adult persons		All employees
	Weekly ordinary time earnings	Weekly total earnings	Weekly total earnings	Weekly ordinary time earnings	Weekly total earnings	Weekly total earnings	Weekly ordinary time earnings	Weekly total earnings	Weekly total earnings
	\$	\$	\$	\$	\$	\$	\$	\$	\$
ORIGINAL									
1996									
November	688.50	728.50	643.00	574.20	584.90	393.70	649.90	680.00	517.70
1997									
February	705.80	742.10	658.80	584.30	594.80	407.80	664.40	691.90	533.10
May	707.30	744.60	652.70	576.30	586.20	397.00	662.30	690.20	524.20
August	717.60	753.90	636.40	583.90	592.20	400.70	671.10	697.80	519.40
November	732.70	765.40	661.60	595.00	605.40	399.10	686.10	711.20	528.00
1998									
February	739.30	776.30	669.20	602.40	615.40	400.10	692.80	721.70	534.10
TREND ²									
1996									
November	686.60	723.30	642.40	571.60	582.40	394.80	647.40	675.30	517.90
1997									
February	700.00	737.00	649.10	576.00	586.10	399.40	657.60	685.20	524.00
May	711.40	748.20	651.00	581.60	591.40	402.50	666.70	694.40	526.50
August	720.20	756.20	651.90	587.20	596.80	401.40	674.50	701.70	526.20
November	729.10	764.60	655.50	593.40	603.50	398.50	682.90	709.50	526.10
1998									
February	738.30	773.40	661.90	600.20	611.50	396.10	692.20	717.80	527.50

¹ For explanation of terms and concepts, refer to *Average Weekly Earnings, States and Australia*, ABS catalogue number 6302.0.

² ABS Trend estimates for the most recent months are revised, see Explanatory Notes.

(Source: *Average Weekly Earnings, States and Australia*, ABS catalogue number 6302.0.)

14

INDEXES OF TOTAL HOURLY RATES OF PAY (EXCLUDING BONUSES)¹: Original (Base of each index: September Quarter 1997 = 100.0)

Industry ² or occupation	Index numbers		% change Dec quarter 1997 to Mar quarter 1998
	Dec quarter 1997	Mar quarter 1998	
SELECTED INDUSTRIES			
Manufacturing	100.2	101.8	1.6
Retail trade	100.3	100.6	0.3
Transport and storage	101.7	102.0	0.3
Finance and insurance	100.6	100.8	0.2
Property and business services	100.0	n.a.	n.a.
Government admin. and defence	100.1	100.8	0.7
Education	100.9	101.2	0.3
Health and community services	100.0	100.3	0.3
All industries³	100.4	101.1	0.7
OCCUPATION			
Managers and administrators	n.a.	n.a.	n.a.
Professionals	100.6	100.7	0.1
Associate professionals	100.4	101.7	1.3
Tradespersons and related workers	100.2	101.3	1.1
Advanced clerical and service workers	n.a.	n.a.	n.a.
Intermediate clerical, sales and service workers	100.3	100.9	0.6
Intermediate production and transport workers	100.4	101.9	1.5
Elementary clerical, sales and service workers	101.6	101.7	0.1
Labourers and related workers	100.2	100.3	0.1
All occupations	100.4	101.1	0.7

¹ These indexes are a measure of quarterly changes in wage and salary costs for employee jobs. They were compiled for the first time for the December quarter 1997. They are one of four sets of indexes that together comprise the Wage Cost Index.

² For explanation of terms and concepts, refer to *Wage Cost Index, Australia*, ABS catalogue number 6345.0.

³ Industry is shown at the ANZSIC division level for selected divisions.

³ Excludes Agriculture, Forestry and Fishing.

(Source: ABS unpublished data.)

15

SUMMARY OF ANNUAL MOVEMENTS IN WAGES AND PRICES¹: Original

Period	CPI. All groups Hobart	Price index of materials used in house building. All groups, Hobart ²	Price index of materials used in building other than house building. All groups, Hobart ²	Average weekly total earnings, full-time adult employees ³
PERCENTAGE CHANGE FROM PREVIOUS YEAR				
1995-96	3.8	2.9	2.6	2.8
1996-97	1.5	-0.5	1.0	4.6
1997-98	-0.1	0.7	0.9	n.y.a.
1996				
March	3.4	2.4	2.5	3.2
June	3.0	0.9	1.2	3.7
September	2.3	-0.2	0.9	3.0
December	1.8	-0.8	0.7	4.9
1997				
March	1.5	-0.5	1.1	6.2
June	0.6	-0.4	1.3	4.2
September	-0.4	-0.2	0.6	6.7
December	-0.1	+0.7	0.9	4.6
1998				
March	-0.3	+0.9	1.0	4.3
June	0.6	+1.6	1.2	n.y.a.

¹ Weekly award rates of pay collection has been discontinued from June 1997.

² Only quarterly data collected from June 1997. Earlier data has been re-compiled from monthly to quarterly.

³ March, June, September and December data relates to February, May, August and November survey dates as published in 6302.0.

(Sources: Consumer Price Index, ABS catalogue number 6401.0; Price Index of Materials Used in House Building, ABS catalogue number 6408.0, (quarterly from June 1997); Price Index of Materials Used in Other than House Building, ABS catalogue number 6407.0, (quarterly from June 1997); Average Weekly Earnings, States and Australia, ABS catalogue number 6302.0)

16

HOUSE PRICE INDEX NUMBERS¹, HOBART: Original

(Base of each Index: 1989-90 = 100.0)

	Established house price index		Project home price index	
	Index	% change ²	Index	% change ²
1994-95	129.0	5.3	121.3	3.1
1995-96	129.8	0.6	123.4	1.7
1996-97	128.5	-1.0	123.3	-0.1
1996				
March	129.8	0.5	123.3	-0.2
June	131.2	1.1	123.3	—
September	130.2	-0.8	123.3	—
December	128.5	-1.3	123.3	—
1997				
March	130.4	1.5	123.3	—
June	124.9	-4.2	123.3	—
September	123.5	-1.1	123.3	—
December	123.9	0.3	123.3	—
1998				
March	129.5	4.5	123.3	—

¹ Used in calculating the mortgage interest charges component of the Consumer Price Index.

² Percentage change over previous period.

(Source: House Price Indexes: Eight Capital Cities, ABS catalogue number 6416.0)

17

CONSUMER PRICE INDEX, HOBART AND EIGHT CAPITAL CITIES COMBINED^{1, 2}: **Original** (Base of each index: year 1989-90 = 100.0)

<i>Hobart</i>						
<i>Period</i>	<i>Food</i>	<i>Clothing</i>	<i>Housing</i>	<i>Household equipment and operation</i>	<i>Transportation</i>	<i>Tobacco and alcohol</i>
1995						
June	116.1	106.1	104.5	115.4	117.2	143.1
September	117.3	105.9	106.0	116.5	119.4	144.3
1996						
March	118.1	106.3	107.2	117.8	119.0	150.3
June	118.4	106.0	107.6	118.5	119.8	153.3
September	120.0	105.9	107.4	119.1	119.7	153.7
December	120.6	105.6	104.8	119.4	121.8	152.7
1997						
March	120.7	105.7	101.9	120.1	122.8	153.1
June	121.0	105.3	98.4	120.1	121.7	153.5
September	121.0	104.8	97.7	119.7	122.2	153.6
December	121.7	106.0	95.5	119.7	122.1	155.6
1998						
March	121.7	105.5	95.3	119.4	121.7	158.0
June	122.3	105.3	95.5	119.5	120.5	160.2
<i>Hobart</i>				<i>Weighted average of eight capital cities</i>		
<i>Period</i>	<i>Health and personal care</i>	<i>Recreation and education</i>	<i>Index, all groups</i>	<i>% change over previous period, all groups</i>	<i>Index</i>	<i>% change over previous period</i>
1995						
June	141.0	114.0	117.1	+0.9	116.2	+1.3
September	146.7	113.3	118.4	+1.1	117.6	+1.2
1996						
March	149.7	117.1	120.1	+0.8	119.0	+0.4
June	150.5	116.0	120.6	+0.4	119.8	+0.7
September	154.1	115.1	121.1	+0.4	120.1	+0.3
December	154.8	116.8	121.3	+0.2	120.3	+0.2
1997						
March	159.4	120.5	121.9	+0.5	120.5	+0.2
June	162.6	119.2	121.3	-0.5	120.2	-0.2
September	153.0	119.2	120.6	-0.6	119.7	-0.4
December	160.9	120.6	121.2	+0.5	120.0	+0.3
1998						
March	162.7	121.7	121.5	+0.2	120.3	+0.3
June	166.1	122.6	122.0	+0.4	121.0	+0.6

¹ Further information on construction of CPI indexes is contained in the bulletin *The Australian Consumer Price Index Concepts, Sources and Methods* (Catalogue No. 6461.0).

² The CPI is now published on a reference base of 1989-90 = 100.0.
(Source: *Consumer Price Index*, ABS catalogue number 6401.0.)

18

PRICE INDEX OF MATERIALS USED IN BUILDING OTHER THAN HOUSE BUILDING, HOBART¹: **Original**
(Base year: 1989–90 = 100.0)

<i>Index numbers for selected major building materials</i>							
<i>Period</i>	<i>Structural timber</i>	<i>Clay bricks</i>	<i>Ready mixed concrete</i>	<i>Precast concrete products</i>	<i>Steel decking, cladding etc.</i>	<i>Structural steel</i>	
1995–96	119.0	122.6	115.2	129.5	111.5	121.4	
1996–97	110.3	125.3	116.2	132.2	115.0	126.2	
1997–98	108.9	129.0	118.0	131.5	117.8	127.2	
1996							
March	118.0	123.4	115.3	129.1	111.8	121.9	
June	115.0	124.0	112.7	128.4	112.3	123.0	
September	113.3	124.5	114.8	132.6	112.3	125.3	
December	109.9	125.2	116.0	132.6	112.2	126.0	
1997							
March	109.2	125.7	116.7	132.2	116.5	126.7	
June	108.9	125.7	117.4	131.2	118.8	126.8	
September	107.5	127.9	114.9	131.2	118.9	126.9	
December	106.6	129.4	116.8	131.2	118.9	127.1	
1998							
March	109.2	129.4	120.4	131.7	118.9	127.4	
June	112.4	129.4	119.9	131.7	114.3	127.4	
<i>Index numbers for selected major building materials</i>							
<i>Period</i>	<i>Reinforcing steel bar, fabric and mesh</i>	<i>Aluminium windows</i>	<i>Fabricated steel products</i>	<i>Builders' hardware</i>	<i>Sand & aggregate</i>	<i>Paint & other coatings</i>	<i>Non-ferrous pipes & fittings</i>
1995–96	108.9	104.5	108.9	118.3	133.1	120.1	172.9
1996–97	110.7	105.9	113.3	117.2	132.7	126.6	165.2
1997–98	112.7	107.2	114.7	113.7	124.5	127.3	164.3
1996							
March	109.2	104.6	108.2	117.9	133.1	121.5	169.3
June	109.2	104.4	111.6	116.5	133.1	121.1	173.9
September	110.2	104.4	112.6	117.8	133.1	126.3	168.2
December	110.9	105.5	113.5	118.8	133.1	127.3	161.4
1997							
March	110.9	106.8	113.4	117.1	134.5	127.4	164.1
June	110.9	106.8	113.5	115.2	129.9	125.5	167.2
September	110.9	106.8	114.0	115.3	121.4	124.6	168.5
December	113.0	106.8	114.0	112.5	121.4	123.5	163.0
1998							
March	113.5	106.8	114.8	112.8	127.5	130.5	162.9
June	113.4	108.4	116.1	114.0	127.5	130.7	162.6

¹ Index numbers in this table have been recompiled to reflect the change to a quarterly collection basis from June 1997.
(Source: *Price Index of Materials Used in Other than House Building*, ABS catalogue number 6407.0.)

continued

18

 PRICE INDEX OF MATERIALS USED IN BUILDING OTHER THAN HOUSE BUILDING, HOBART¹: **Original**—continued
 (Base year: 1989–90 = 100.0)

Period	<i>All electrical materials</i>		<i>All mechanical services</i>		<i>All plumbing materials</i>	
	Index	% change over previous period	Index	% change over previous period	Index	% change over previous period
1995–96	118.6	+7.0	115.1	+2.2	127.7	+2.5
1996–97	117.4	-1.0	117.0	+1.7	122.8	-3.8
1997–98	117.2	-0.2	117.0	—	121.9	-0.7
1996						
June	119.1	+0.8	116.2	+0.8	127.0	-0.5
September	115.7	-2.9	117.1	+0.8	126.3	-0.6
December	118.3	+2.2	116.8	-0.3	120.8	-4.4
1997						
March	118.1	-0.2	116.8	—	121.4	+0.5
June	117.5	-0.5	117.1	+0.3	122.5	+0.9
September	117.6	+0.1	116.6	-0.4	122.8	+0.2
December	117.8	+0.2	116.8	+0.2	122.0	-0.7
1998						
March	116.9	-0.8	117.4	+0.5	121.6	-0.3
June	116.5	-0.3	117.1	-0.3	121.0	-0.5
Period	<i>All groups excluding electrical materials and mechanical services</i>		<i>All groups</i>			
	Index	% change over previous period	Index	% change over previous period		
1995–96	115.5	+2.5	115.1	+2.6		
1996–97	116.8	+1.1	116.3	+1.0		
1997–98	118.0	+1.0	117.4	+0.9		
1996						
June	115.3	-0.3	115.2	—		
September	116.3	+0.9	115.8	+0.5		
December	116.5	+0.2	116.1	+0.3		
1997						
March	117.0	+0.4	116.5	+0.3		
June	117.3	+0.3	116.7	+0.2		
September	117.1	-0.2	116.5	-0.2		
December	117.7	+0.5	117.2	+0.6		
1998						
March	118.2	+0.4	117.7	+0.4		
June	118.9	+0.6	118.1	+0.3		

¹ Index numbers in this table have been recomputed to reflect the change to a quarterly collection basis from June 1997.
 (Source: *Price Index of Materials Used in Other than House Building*, ABS catalogue number 6407.0.)

19

PRODUCTION OF SELECTED COMMODITIES: Original

Year or month	Dairy products ¹			Staff-hours worked	
	Whole milk ²	Factory butter ³	Factory cheese	Textile manufacturing ⁴	Vegetable preserving
	million litres	tonnes	tonnes	'000	'000
1994-95	436.5	8 105	20 529	1 527	1 838
1995-96	513.8	9 589	24 852	1 443	1 784
1996-97	529.4	10 869	r 25 397	1 349	1 534
1997					
May	27.6	893	905	115	138
June	15.9	338	650	110	111
July	12.2	187	r 482	134	124
August	21.1	335	r 838	97	106
September	52.6	625	r 2 733	107	91
October	82.0	1 348	r 3 922	110	80
November	81.4	1 185	r 3 751	91	115
December	74.4	1 111	r 3 456	79	95
1998					
January	58.4	r 1 045	r 2 813	56	48
February	44.5	786	2 383	88	81
March	43.5	640	2 663	92	80
April	32.0	600	r 1 783	88	97
May	24.6	451	1 920	89	110
Year or month (quarterly for electricity)	Newsprint ⁵ '000 tonnes	Refined zinc '000 tonnes	Metal, refin. index ⁶	Electricity ⁷ million kW.h	
1994-95	222.7	189.8	98.3	8 688	
1995-96	242.9	207.8	104.7	9 100	
1996-97	232.7	207.7	116.1	9 543	
1997					
May	23.7	19.4	119.0	..	
June	17.6	17.7	117.8	(June qtr) 2 455	
July	n.a.	18.0	117.6	..	
August	n.a.	16.7	111.8	..	
September	n.a.	16.4	108.7	(Sept qtr) 2 550	
October	n.a.	17.8	118.4	..	
November	n.a.	15.7	117.4	..	
December	n.a.	18.0	123.1	(Dec. qtr) 2 350	
1998					
January	n.a.	17.3	118.4	..	
February	n.a.	15.8	110.9	..	
March	n.a.	14.4	117.4	(Mar. qtr) 2 260	
April	n.a.	14.3	114.4	..	
May	n.a.	14.9	119.0	..	

¹ Source: Australian Dairy Corporation.

² Includes the whole milk equivalent of farm cream intake.

³ Includes butter equivalent of butter oil.

⁴ Includes spinning, weaving and carpet making. Reported by establishments which manufacture textiles only, or manufacture clothing and textiles in the one plant.

⁵ Excludes production of directory newsprint and high grade specialty paper.

⁶ Metallurgical refining index (Base: 1979-80 = 100.0) Output from selected establishments covering the smelting and refining of ferro-alloys, zinc and aluminium. The weighting pattern is based on the establishments' value added as derived from the 1979-80 Manufacturing Census. For multi-product establishments, value added was apportioned to products on the basis of gross receipts from each product.

⁷ Collected on a quarterly basis as from 1997.

(Source: ABS unpublished data.)

20

LIVESTOCK SLAUGHTERING: **Original**

Year or month	Cattle			Sheep	Lambs	Pigs
	Bulls, bullocks and steers	Cows and heifers	Calves			
	'000	'000	'000			
1994-95	111.2	96.7	28.8	569.3	477.2	92.9
1995-96	95.4	88.9	41.4	349.7	393.3	86.5
1996-97	110.2	93.4	43.6	384.4	364.0	74.9
1996						
May	10.4	10.8	1.4	37.0	37.9	7.7
1997						
May	9.7	12.3	1.7	35.9	41.8	7.5
June	7.5	10.3	0.9	31.0	29.9	5.9
July	8.6	9.5	1.9	30.6	35.9	7.7
August	7.2	6.4	14.7	22.5	22.0	5.7
September	5.3	4.9	20.4	18.0	23.1	5.4
October	6.7	9.4	9.4	32.9	32.3	6.8
November	7.3	9.7	1.2	39.5	31.1	5.7
December	9.1	10.1	0.2	57.1	31.3	7.5
1998						
January	9.2	13.3	0.2	56.5	43.9	6.9
February	8.1	10.4	0.2	56.2	33.0	5.6
March	8.2	9.7	0.6	48.6	40.9	5.4
April	r 7.5	r 12.9	r 2.2	r 42.6	r 44.6	6.2
May	p 8.4	p 15.2	p 1.9	p 32.0	p 42.9	p 6.7

(Source: *Livestock Products, Australia*, ABS catalogue number 7215.0.)

21

LIVESTOCK SLAUGHTERING: **Seasonally adjusted and trend**

Month	Seasonally adjusted			Trend		
	Cattle and calves	Sheep and lambs	Pigs	Cattle and calves	Sheep and lambs	Pigs
	'000	'000	'000	'000	'000	'000
1996						
May	21.2	63.1	6.7	18.7	57.7	6.9
1997						
May	23.1	66.3	6.7	23.1	68.3	6.5
June	21.6	59.4	5.9	23.2	68.9	6.4
July	24.0	76.3	7.0	23.1	70.0	6.3
August	25.2	79.7	6.1	23.0	71.5	6.3
September	19.4	60.5	5.8	23.0	73.3	6.3
October	24.7	81.8	7.0	23.1	r 74.8	6.4
November	24.4	72.7	6.0	23.4	r 76.2	6.5
December	20.8	77.6	6.4	23.8	r 76.8	6.5
1998						
January	26.7	80.4	7.4	24.3	r 76.8	6.5
February	25.4	76.2	6.3	24.8	r 76.3	6.3
March	22.7	72.1	5.5	r 25.2	r 75.0	6.2
April	r 27.2	r 77.3	6.1	25.5	r 73.3	r 6.1
May	25.7	67.5	6.3	25.9	72.2	6.1

(Source: ABS unpublished data)

22 MEAT PRODUCTION¹: Original

	<i>Beef</i>	<i>Veal</i>	<i>Mutton</i>	<i>Lamb</i>	<i>Pigmeat</i> ²	<i>Total</i>
<i>Year or month</i>	tonnes	tonnes	tonnes	tonnes	tonnes	tonnes
1994-95	49 907	977	11 230	8 412	5 982	76 509
1995-96	45 377	875	7 414	7 407	5 634	66 707
1996-97	51 723	907	8 170	6 876	4 934	72 610
1996						
May	5 246	34	779	715	502	7 276
1997						
May	5 461	39	749	791	496	7 536
June	4 416	21	644	564	389	6 034
July	4 467	42	639	677	437	6 262
August	3 550	302	452	415	362	5 081
September	2 478	412	365	436	345	4 037
October	4 113	192	675	612	430	6 022
November	4 251	51	820	578	362	6 062
December	4 890	7	1 169	583	447	7 096
1998						
January	5 115	6	1 158	831	436	7 547
February	4 693	7	1 115	619	351	6 786
March	4 629	14	1 013	809	351	6 817
April	r 4 813	r 49	r 1 313	r 846	396	r 7 418
May	p 5 431	p 44	p 636	p 836	p 437	p 7 385

¹ Carcass weight.

² Includes pork used for production of bacon and ham.

(Source: *Livestock Products, Australia*, ABS catalogue number 7215.0.)

23 PRINCIPAL MINERAL CONCENTRATES PRODUCED: Original

	<i>Copper</i>	<i>Iron (pellets)</i>	<i>Lead</i>	<i>Lead-zinc</i>	<i>Tin</i>	<i>Zinc</i>
<i>Year or quarter</i>	'000 tonnes	'000 tonnes	'000 tonnes	'000 tonnes	'000 tonnes	'000 tonnes
1994-95	59.4	1 483.8	97.4	45.3	14.3	350.6
1995-96	53.5	1 681.3	106.3	38.6	16.0	361.5
1996-97	99.7	809.4	101.4	38.0	16.3	356.9
1996						
March	19.8	326.9	24.1	11.4	3.5	84.8
June	21.5	475.4	24.1	9.2	4.3	85.0
September	26.0	439.3	30.6	10.3	3.9	88.6
December	25.6	366.7	24.9	11.0	4.0	89.5
1997						
March	24.0	3.3	22.9	10.2	3.9	85.6
June	24.2	—	23.0	6.4	4.6	93.3
September	27.2	—	22.5	5.4	4.8	88.6
December	28.5	164.5	22.1	6.7	3.7	87.3
1998						
March	26.1	253.8	21.9	8.2	3.3	79.4

(Source: Mineral Resources Division of Tasmania Development and Resources)

24

SAWMILLS AND PLYWOOD MILLS, LOGS DELIVERED AND TIMBER PRODUCED: **Original**

Year or quarter	Tasmanian-grown logs delivered					Sawn, peeled and sliced timber produced ¹				
	Eucalypts	Hardwoods, excluding eucalypts ²	Plantation ³ softwoods	Native softwoods ⁴	Total	Eucalypts	Hardwoods, excluding eucalypts ²	Plantation ³ softwoods	Native softwoods ⁴	Total
1994-95	653.1	12.6	304.9	2.8	973.4	212.5	4.3	142.7	0.6	360.1
1995-96	602.8	13.0	343.7	1.4	960.9	192.4	4.4	152.0	0.5	349.3
1996-97	500.8	17.0	352.9	1.2	871.9	165.8	4.3	158.0	0.5	328.5
1996										
March	136.6	6.7	98.1	0.3	241.7	41.5	0.9	41.2	0.1	83.7
June	142.9	3.0	95.5	0.6	242.0	46.5	1.2	38.8	0.1	86.6
September	135.5	2.5	96.1	—	234.2	47.3	1.1	42.3	0.1	90.8
December	112.7	3.9	82.3	0.5	199.4	40.1	0.9	40.6	0.1	81.8
1997										
March	108.7	6.6	85.0	0.4	200.8	34.0	1.0	36.6	—	71.6
June	143.9	3.9	89.4	0.3	237.5	44.5	1.2	38.4	0.2	84.3
September	139.5	2.7	98.3	0.3	240.9	52.4	1.5	42.3	0.1	96.3
December	123.4	3.1	73.4	0.2	200.2	45.3	1.0	41.2	0.1	87.6
1998										
March	105.0	13.7	99.5	0.2	218.6	31.9	1.7	44.6	0.1	78.3

¹ Includes plywood, veneer and sliced timber production converted to an equivalent cubic measurement.
² Includes blackwood, myrtle, sassafras etc.
³ Radiata pine.
⁴ Includes Huon pine, celery top pine and King William pine.
(Source: ABS unpublished data.)

25

CHIPPING AND GRINDING OF WOOD¹: **Original**

Year or quarter	Producing locations ²	Materials used ³		
		Logs delivered ⁴	Sawmill offcuts	Chipped and ground wood production
		no.	'000 m ³	'000 m ³
1994-95	31	4 064.1	394.2	4 343.1
1995-96	31	3 510.0	457.9	3 820.1
1996-97	27	3 207.4	433.2	3 609.3
1996				
March	32	842.6	109.8	958.0
June	31	799.6	125.3	878.1
September	30	767.5	133.5	870.9
December	30	805.1	117.5	908.4
1997				
March	28	759.7	87.0	829.2
June	27	875.1	95.2	1 000.9
September	27	936.1	112.8	1 064.1
December	28	999.2	113.6	1 100.1
1998				
March	28	1 014.7	116.6	1 157.7

¹ Both hardwoods and softwoods, separate details are not available.
² Capable of producing at end of year or actually producing during quarter.
³ Data reported by weight, converted to cubic measure by the factor 0.95 m³ per tonne.
⁴ Includes log equivalent of limbwood and billets.
(Source: ABS unpublished data.)

26

LOGS DELIVERED FOR MILLING OR CHIPPING: Original

Year or quarter	Sawmilling and plywood milling			Chipping and grinding ¹			Total		
	Crown land ²	Private land	Total	Crown land ²	Private land	Total	Crown land ²	Private land	Total
	'000 m ³	'000 m ³	'000 m ³	'000 m ³	'000 m ³	'000 m ³	'000 m ³	'000 m ³	'000 m ³
1994-95	780.3	193.2	973.4	1 966.8	2 097.3	4 064.1	2 747.1	2 290.4	5 037.6
1995-96	773.5	187.4	960.9	1 579.6	1 930.4	3 510.0	2 353.1	2 117.8	4 470.9
1996-97	725.6	146.4	871.9	1 627.4	1 580.0	3 207.4	2 353.0	1 726.3	4 079.3
1996									
March	202.3	39.4	241.7	405.3	437.3	842.6	607.6	476.7	1 084.3
June	191.9	50.1	242.0	347.9	451.8	799.6	539.7	501.8	1 041.6
September	194.3	39.9	234.2	403.5	364.0	767.5	597.8	403.9	1 001.7
December	162.5	36.9	199.4	411.0	394.1	805.1	573.5	430.9	1 004.5
1997									
March	170.3	30.5	200.8	375.7	383.9	759.7	546.0	414.5	960.5
June	198.5	39.1	237.5	437.2	437.9	875.1	635.7	477.0	1 112.6
September	201.0	39.8	240.9	464.9	471.2	936.1	665.9	511.0	1 177.0
December	166.6	33.6	200.2	485.0	514.3	999.2	651.5	547.9	1 199.4
1998									
March	191.9	26.7	218.6	466.6	548.1	1 014.7	658.5	574.9	1 233.3

¹ Logs used are generally below sawmilling standard; includes log equivalent of limbwood and billets.

² Comprises all areas (including concession areas) from which royalties are payable to Forestry Tasmania. (Source: ABS unpublished data.)

27

BUILDING APPROVALS: **Original**

Year or month	Dwelling units				Value				
	New houses	New other residential buildings ¹	Other dwell. units created (conversions etc.) ²	Total dwelling units	New dwelling units	Alterations and additions to residential buildings ³	Non-residential building ⁴		Total of all building
							Private	Total	
no.	no.	no.	no.	\$'000	\$'000	\$'000	\$'000	\$'000	
1994-95	2 576	596	14	r 3 186	244 623	39 963	r 117 985	161 567	446 152
1995-96	1 938	601	7	2 546	217 445	36 890	119 849	216 752	471 086
1996-97	1 593	251	17	1 861	157 428	35 323	121 490	158 970	351 720
1997									
May	121	25	1	147	12 768	2 723	16 913	18 091	33 582
June	104	13	1	118	9 464	2 523	13 294	13 619	25 606
July	109	56	—	165	14 289	3 695	5 761	7 807	25 790
August	121	14	1	136	10 987	r 3 482	r 4 945	r 6 445	20 913
September	131	18	—	149	13 803	2 845	3 806	13 474	30 122
October	128	35	—	163	13 878	3 413	8 584	10 722	28 014
November	120	8	—	128	11 098	2 816	3 459	7 341	21 255
December	130	24	1	155	13 535	2 740	10 958	12 655	28 931
1998									
January	123	10	—	133	11 690	3 138	9 993	13 066	27 894
February	115	6	—	121	10 055	3 092	2 692	6 178	19 325
March	117	8	—	125	11 997	3 220	10 684	15 852	31 069
April	122	11	—	133	11 230	2 660	5 846	8 522	22 411
May	106	20	2	128	10 643	3 842	11 628	14 555	29 039

¹ New individual dwelling units (e.g. flats, home units and villa units).

² From alterations and additions to residential building, conversions of non-residential building to residential building etc.

³ Valued at \$10,000 and over. Includes conversions and dwelling units approved as part of alterations and additions or as part of the construction of non-residential building.

⁴ Comprises non-residential building (new plus alterations and additions) valued at \$50,000 and over.

(Source: *Building Approvals, Tasmania*, ABS catalogue number 8731.6.)

28

SECURED HOUSING COMMITMENTS¹: **Original, seasonally adjusted and trend**

Month	Total number of dwellings ²			Total value of commitments ³		
	Original	Seasonally adjusted	Trend	Original	Seasonally adjusted	Trend
	no.	no.	no.	\$m	\$m	\$m
1997						
May	943	865	809	64	58	58
June	756	724	799	55	57	58
July	786	774	791	58	57	59
August	801	792	789	61	60	59
September	796	808	796	63	63	60
October	845	834	809	61	60	61
November	756	776	r 823	57	58	62
December	816	874	r 829	64	68	r 63
1998						
January	668	787	r 827	51	59	63
February	851	886	r 821	67	68	62
March	840	764	r 810	65	59	r 61
April	r 850	r 837	r 796	r 59	r 59	r 59
May	791	730	783	59	53	57

¹ New seasonal adjustment factors resulting from the annual seasonal reanalysis were introduced in the January 1998 issue.

² Includes new dwellings, established dwellings and refinancing. Excludes alterations and additions.

³ Commitment is a firm offer of housing finance. It either has been, or is normally expected to be, accepted. Includes commitments to provide housing finance to employees and commitments accepted and cancelled in the same month. Excludes alterations and additions. Includes refinancing.

(Source: *Housing Finance for Owner Occupation, Australia*, ABS catalogue 5609.0.)

29

BANKING STATISTICS¹: Original

Month	Deposits				
	Current bearing interest	Current – not bearing interest	Fixed	Investment savings accounts	Statement savings accounts
	\$m	\$m	\$m	\$m	\$m
1997					
May	695	249	1 760	600	230
June	685	249	1 750	600	219
July	710	242	1 750	602	220
August	712	239	1 751	608	227
September	714	236	1 706	608	232
October	736	234	1 679	608	234
November	740	237	1 656	605	231
December	771	251	1 690	611	238
1998					
January	775	250	1 685	620	237
February	758	246	1 709	623	235
March	748	248	1 768	628	234
April	760	245	1 795	632	233
May	752	243	1 805	633	234

Month	Deposits			
	Passbook/School savings accounts	Other	Total	Loans ²
	\$m	\$m	\$m	\$m
1997				
May	119	101	3 754	4 423
June	117	100	3 719	4 500
July	114	94	3 733	4 559
August	114	98	3 748	4 590
September	112	95	3 704	4 547
October	110	95	3 696	4 530
November	107	99	3 675	4 541
December	102	95	3 758	4 630
1998				
January	100	95	3 743	5 741
February	98	95	3 764	4 745
March	97	96	3 820	4 784
April	99	94	3 857	4 811
May	98	95	3 860	4 828

¹ Details are the averages of weekly figures for each month. The figures are derived from returns submitted by banks authorised under the *Banking Act* together with similar returns voluntarily submitted by the State banks; they exclude the Reserve Bank.

² Excludes non-resident loans.

(Source: Reserve Bank of Australia.)

30

PRIVATE NEW CAPITAL EXPENDITURE BY TYPE OF ASSET^{1, 2}: Original

Year or quarter	Buildings and structures	Equipment, plant, and machinery	Total
	\$m	\$m	\$m
	1995–96	190	423
1996–97	128	559	687
1996–97			
December	35	157	192
March	30	140	169
June	30	144	175
1997–98			
September	37	136	174
December	r 59	r 128	r 187
March	31	110	141

¹ Estimates based on a sample survey and therefore subject to sampling variability. Covers selected industries only—mining, manufacturing, finance, property and other selected industries.

² Data revised back to June quarter 1987. See *Improvements to ABS Economic Statistics* (catalogue number 1357.0).

(Source: *State Estimates of Private New Capital Expenditure*, ABS catalogue number 5646.0.)

31 PASSENGER ARRIVALS AND DEPARTURES, TASMANIA¹: Original

Period	Arrivals				Departures Total	Cruise ships ²	
	By air— interstate	By air— international	By sea	Total		Arrivals	Departures
1993	694 244	5 144	115 381	814 769	814 835	2 033	2 033
1994	745 508	4 166	128 644	878 318	880 936	6 592	6 592
1995	811 784	3 982	116 869	932 635	931 278	6 199	6 199
1996	831 040	2 999	115 486	949 525	961 468	5 286	5 286
1997 p	796 870	2 238	139 446	938 554	963 533	4 600	4 600
1997							
May p	55 569	—	8 680	64 249	76 312	—	—
June p	58 491	—	10 223	68 714	67 235	—	—
July p	53 633	—	6 512	60 145	67 778	—	—
August p	57 543	—	10 346	67 889	70 256	—	—
September p	70 562	—	13 566	84 128	79 173	—	—
October p	69 626	—	12 548	82 174	80 690	—	—
November p	66 037	391	10 563	76 991	75 593	120	120
December p	80 676	293	16 222	97 191	80 165	—	—
1998							
January p	81 910	369	19 696	101 975	121 493	2 730	2 730
February p	73 432	401	15 909	89 742	84 795	6 634	6 634
March p	73 822	413	15 461	89 696	96 025	2 400	2 400
April p	70 201	327	15 671	86 199	88 789	1 200	1 200
May p	56 859	327	8 105	64 964	76 659	1 200	1 200

¹ The following persons are not included in these statistics: passengers under three years of age accompanied by an adult; passengers travelling on chartered flights with minor carriers; passengers travelling on private or VIP flights; and passengers from or departing for overseas other than direct flights to New Zealand.

² The number of passengers is Cruise ship capacity rather than passengers travelled. Data is not included in total arrivals and departures. (Source: Tourism Tasmania.)

32 TOTAL PASSENGER ARRIVALS BY AIR AND SEA, TASMANIA: Original, seasonally adjusted and trend

Period	Original	Seasonally adjusted ¹	Trend ²
1997			
May p	64 249	78 908	79 063
June p	68 714	79 530	79 825
July p	60 145	75 438	80 006
August p	67 889	85 016	79 795
September p	84 128	77 780	79 601
October p	82 174	81 951	79 805
November p	76 991	76 942	80 543
December p	97 191	79 744	81 333
1998			
January p	101 975	84 181	82 073
February p	89 742	84 594	82 648
March p	89 696	83 779	82 792
April p	86 199	81 529	82 523
May p	64 964	79 809	82 278

¹ There is an annual recalculation of seasonal adjustment factors to include the most recent year's arrivals. This occurs at the end of each financial year and may cause revisions to previously published seasonally adjusted and trend figures. A full time series of seasonally adjusted and trend series from January 1971 is available on request, telephone (03) 6222 5912.

² Trend estimates for the most recent months have been revised, see Explanatory Notes. (Source: Tourism Tasmania. ABS unpublished data)

Period	Establish- ments no.	Guest rooms no.	Bed spaces no.	Persons employed no.	Room nights occupied '000	Room occup- ancy rate %	Guest nights '000	Bed occup- ancy rate %	Guest arrivals '000	Takings from accom- modation \$'000
LICENSED HOTELS WITH FACILITIES										
1997										
Mar qtr	55	2 950	8 027	3 087	163.7	61.7	280.8	38.9	152.4	13 892
1998										
Jan	n.a.	n.a.	n.a.	n.a.	54.2	59.7	101.9	41.1	54.0	4 756
Feb	n.a.	n.a.	n.a.	n.a.	55.7	67.9	90.1	40.2	51.1	4 762
Mar	n.a.	n.a.	n.a.	n.a.	63.5	69.9	102.0	41.1	56.4	5 331
Mar qtr	55	2 930	8 000	2 870	173.4	65.8	294.0	40.8	161.6	14 849
MOTELS AND GUEST HOUSES WITH FACILITIES										
1997										
Mar qtr	50	1 689	5 275	731	101.6	66.8	194.7	41.0	110.3	7 691
1998										
Jan	n.a.	n.a.	n.a.	n.a.	35.9	66.4	74.1	44.5	42.1	2 890
Feb	n.a.	n.a.	n.a.	n.a.	33.9	69.5	62.8	41.7	36.7	2 609
Mar	n.a.	n.a.	n.a.	n.a.	39.1	72.4	73.6	44.2	43.6	3 016
Mar qtr	52	1 743	5 372	753	108.9	69.4	210.5	43.5	122.4	8 515
SERVICED APARTMENTS										
1997										
Mar qtr	21	670	2 674	368	38.7	64.3	n.a.	n.a.	n.a.	3 905
1998										
Jan	n.a.	n.a.	n.a.	n.a.	18.6	70.6	47.1	47.1	22.8	1 930
Feb	n.a.	n.a.	n.a.	n.a.	15.8	66.6	33.3	36.8	17.2	1 556
Mar	n.a.	n.a.	n.a.	n.a.	17.6	66.9	36.6	36.5	19.1	1 849
Mar qtr	23	848	3 231	395	52.0	68.1	117.0	40.2	59.1	5 335
TOTAL ESTABLISHMENTS										
1997										
Mar qtr	126	5 309	15 976	4 186	304.0	63.6	n.a.	n.a.	n.a.	25 487
1998										
Jan	n.a.	n.a.	n.a.	n.a.	108.7	63.5	223.1	43.3	119.0	9 577
Feb	n.a.	n.a.	n.a.	n.a.	105.4	68.2	186.2	40.0	105.1	8 927
Mar	n.a.	n.a.	n.a.	n.a.	120.2	70.2	212.2	41.2	119.0	10 196
Mar qtr	130	5 521	16 603	4 018	334.3	67.3	621.4	41.6	343.1	28 699

¹ Comprising establishments with 15 or more rooms or units. Note: The Survey of Tourist Accommodation has been substantially revised from the March quarter 1997. For an explanation, including definitions, refer to *Tourist Accommodation*, ABS catalogue number 8635.0. (Source: *Tourist Accommodation Australia*, ABS catalogue number 8635.0. For more detailed information, see also *Tourist Accommodation Small Area Data Tasmania*, ABS product number 8635.6.40.001)

34 REGISTRATIONS OF NEW MOTOR VEHICLES¹: Original

Year or month	Passenger vehicles	Other vehicles ²	Total (excl. motor cycles)	Vehicles registered by vehicle rental businesses ³	Motor cycles
	no.	no.	no.	no.	no.
1995	10 919	2 874	13 793	1 952	393
1996	11 445	2 726	14 171	2 384	462
1997	12 512	2 606	15 118	2 458	518
1997					
May	941	270	1 211	6	36
June	861	267	1 128	22	28
July	1 217	259	1 476	366	46
August	1 094	220	1 314	270	44
September	1 339	164	1 503	547	44
October	1 197	190	1 387	252	44
November	916	192	1 108	119	40
December	1 892	261	2 153	865	68
1998					
January	752	173	925	12	40
February	775	232	1 007	8	70
March	1 017	207	1 224	14	42
April	817	216	1 033	6	34
May p	941	301	1 242	3	38

¹ Includes State and Commonwealth Government-owned motor vehicles other than those belonging to the defence services. Excludes tractors, plant and equipment, caravans and trailers.

² Comprises utilities, panel vans, rigid and articulated trucks and other truck-type vehicles (i.e. motor vehicles designed for purposes other than freight carrying, e.g. campervans, tow trucks, ambulances and hearses) and buses.

³ These figures are included in previous columns.

(Source: *Motor Vehicle Registrations Australia*, ABS catalogue number 9301.0. ABS unpublished data.)

35 TURNOVER OF RETAIL ESTABLISHMENTS AT CURRENT PRICES: Original and trend

Period	Original \$m	Trend estimates ¹	
		\$m	Change from corresponding month of previous year %
1997			
May	263.7	261.7	2.4
June	244.1	264.1	3.7
July	259.4	267.2	5.2
August	255.3	270.3	6.5
September	255.8	272.4	7.2
October	278.1	273.1	7.1
November	283.9	272.3	6.2
December	349.8	270.2	4.9
1998			
January	260.4	267.7	3.6
February	245.1	265.4	2.6
March	258.3	263.7	1.7
April	257.2	262.2	0.8
May	259.5	261.1	-0.2

¹ Trend estimates for the most recent months have been revised. See Explanatory Notes.
(Source: *Retail Trade, Australia*, ABS Catalogue number 8501.0)

	NSW	Vic.	Qld	SA	WA	Tas.	Aust. ¹
Population							
Estimated resident population, December 1997 ('000) p	6 306.3	4 627.3	3 430.4	1 482.9	1 811.1	471.8	18 631.1
Proportion of Australian population, December 1997 (%) p	33.8	24.8	18.4	8.0	9.7	2.5	100.0
Population growth rate, 12 months to December 1997 (%) p	1.0	1.0	1.7	0.5	1.6	-0.5	1.1
Labour Force							
Employment growth, 12 months to June 1998 (trend series) (%)							
Males	1.5	2.8	3.1	-1.7	1.8	0.4	1.8
Females	2.3	3.0	4.6	-5.8	6.0	5.9	2.6
Persons	1.8	2.9	3.8	-3.5	3.6	2.7	2.2
Unemployment rate (trend series), June 1998 (%)	7.5	8.4	8.5	10.0	7.0	10.5	8.1
Unemployment growth, 12 months to June 1998 (trend series) (%)	-6.0	-7.8	-6.9	+0.1	+1.4	-2.5	-5.3
Participation rate (trend series), June 1998 (%)	61.7	63.7	64.8	59.6	66.5	59.9	63.2
Average weekly overtime worked per employee, May 1998 (hours)	0.9	1.0	1.0	0.7	1.2	0.7	1.0
Job vacancy rate, May 1998 (%)	0.9	1.0	1.2	0.5	1.6	0.4	1.0
Working days lost through industrial disputes, 12 months to March 1998 (days per '000 employees)	68	136	54	12	70	35	76
Wages and Prices							
Average weekly total earnings, full-time adult employees (trend series) February 1998 (\$)							
Males	850.90	821.60	783.80	755.10	846.70	773.40	824.30
Females	677.20	653.30	625.70	633.00	618.90	611.50	655.40
Persons	784.40	762.40	722.90	710.60	761.20	717.80	761.10
Average weekly total earnings, full-time adult employees, growth rate (trend series), 12 months to February 1998 (%)	3.3	4.2	4.8	2.7	3.6	4.8	3.9
Consumer price index, all groups, annual growth to June quarter 1998 (%) ²	1.0	0.3	1.0	0.4	0.7	0.6	0.7
Building							
% change in the number of new residential dwelling units approved in 12 months ended April 1998, over the same period previous year	10.1	31.2	9.1	14.7	12.6	-14.7	13.7
Private Investment and Retail Trade							
% change in private new capital expenditure, 12 months ended March 1998, over the same period previous year	3.4	0.2	1.1	29.7	15.6	0.3	3.4
% change in <i>trend</i> estimates turnover of retail establishments, May 1998 (change from corresponding month of the previous year)	2.5	3.3	8.3	8.8	2.2	-0.2	4.2
Transport							
% change in number of new motor vehicles (excluding motorcycles) registered 12 months ended May 1998, over the same period previous year	11.5	15.2	13.8	16.3	14.3	7.8	13.9
Agriculture							
% change in the number of livestock slaughtered 12 months ended May 1998 over the same period previous year							
Cattle and calves	6.9	9.9	19.7	5.6	8.9	8.5	9.0
Sheep and lambs	7.1	9.8	15.6	11.4	-4.4	15.9	5.7
Tourism: Room occupancy rates							
Hotels, motels & guest houses, & serviced apartments with facilities, March quarter 1998(%)	59.8	60.1	54.3	59.2	58.5	67.3	58.0
Australian National and State Accounts							
% change in Domestic (State) Final Demand, ³ Average 1989-90 Prices Trend Series							
Dec.. qtr 1997 to Mar. qtr 1998	1.4	0.2	-0.1	0.5	1.2	0.0	0.7
Mar. qtr 1997 to Mar. qtr 1998	7.0	2.5	2.9	4.9	9.1	0.7	4.8

¹ Australian totals include the ACT and NT.² CPI applies to State capitals.³ Total of four types of expenditure: Private investment, Private consumption, Government investment, Government consumption.

37 MAJOR STATISTICAL INDICATORS—TASMANIAN STATISTICAL DIVISIONS

Particulars	Unit	Greater Hobart and Southern Statistical Division	Northern Statistical Division	Mersey-Lyell Statistical Division	Tasmania
Area , 30 June 1996	km ²	25 521	19 935	22 507	67 964
Population					
Estimated resident population, 30 June 1996	no.	230 187	134 047	110 209	474 443
Estimated resident population, 30 June 1997 (p)	no.	230 113	133 710	109 678	473 501
Births 1996	no.	2 922	1 979	1 536	6 437
Deaths 1996	no.	1 871	1 114	879	3 864
Labour Force (original), December 1997					
Total employed	no.	93 100	54 300	48 000	195 400
Total unemployed	no.	10 500	8 800	8 500	27 900
Unemployment rate	%	10.2	13.9	15.1	12.5
Participation rate	%	60.4	60.3	60.5	60.4
Schools, 1997¹					
Government	no.	102	60	60	222
Non-government	no.	35	16	16	67
Full-time school students, 1997¹					
Government	no.	29 355	17 913	15 653	62 921
Non-government	no.	12 128	4 909	4 199	21 236
Educational qualification, 1996 Census²					
Bachelor degree or higher ³	no.	17 058	7 152	3 908	28 184
Undergraduate diploma	no.	5 893	3 268	2 181	11 374
Associate diploma	no.	3 775	1 902	1 466	7 184
Skilled vocational	no.	16 255	10 040	8 841	35 238
Basic vocational	no.	4 548	2 632	2 305	9 515
Agriculture					
Establishments with agricultural activity, 1996-97 season	no.	1 146	1 605	1 785	4 536
Total area of establishments	ha	723 377	867 132	329 439	1 919 948
Crops, production, 1996-97 season					
Potatoes	tonnes	4 890	105 493	r 207 066	r 317 449
Onions	tonnes	1 028	11 133	47 517	59 677
Apples	tonnes	42 829	4 695	8 125	55 649
Barley	tonnes	8 570	22 999	3 668	35 237
Livestock, 1996-97 season					
Beef cattle	no.	89 027	213 141	212 393	514 561
Dairy cattle	no.	6 313	77 887	126 437	210 637
Sheep and lambs	no.	1 779 992	2 014 236	182 361	3 976 589
Pigs	no.	2 299	17 313	4 240	23 852
Gross value of agric. production, 1996-97p	\$m	n.y.a.	n.y.a.	n.y.a.	668
Tourist accommodation —hotels, motels etc.					
Establishments, December quarter 1997	no.	89	68	56	213
Room occupancy rates, 1997	%	53.3	49.7	43.4	49.7
Takings, 1997	\$'000	43 670	22 889	17 706	84 265
Business locations, September 1997					
Locations with manufacturing activity					
Less than 20 employees	no.	396	314	235	945
20 or more employees	no.	68	65	42	175
Total	no.	464	379	277	1 120
Locations with retail activity					
Less than 20 employees	no.	2 012	1 303	1 135	4 450
20 or more employees	no.	76	39	35	150
Total	no.	2 088	1 342	1 170	4 600
Building, 1996-97					
New dwelling units approved	no.	939	526	379	1 844
Value of new residential building approved	\$'000	81 603	41 812	32 295	155 710
Value of all building approved	\$'000	164 600	101 014	86 105	351 721
Dwellings, Census 1996²					
Total dwellings	no.	98 815	57 467	45 529	201 820
Occupied private dwellings	no.	85 255	49 759	40 183	175 197
Fully owned	no.	34 338	21 563	18 359	74 260

¹ Source: DEETYA and Tasmanian Department of Education, Community & Cultural Development.

² Total includes migratory statistical division.

³ Includes Higher degree, Postgraduate diploma and Bachelor degree.

EXPLANATORY NOTES

INTRODUCTION

1 This publication contains latest figures for a comprehensive range of economic indicators. Statistics shown in this publication are the latest available at the date of preparation and may be subject to revision in subsequent issues. In a number of cases figures appearing in this publication are preliminary and are subject to revision in subsequent issues. Reference should therefore always be made to the latest issue or to the statistical publication on the specific subject.

SEASONAL ADJUSTMENT AND TREND ESTIMATION

2 Seasonal adjustment is a means of removing the estimated effects of normal seasonal variation from the series so that the effects of other influences on the series can be more clearly recognised. Seasonal adjustment does not aim to remove the irregular or non-seasonal influences which may be present in any particular month. This means that month-to-month movements of the seasonally adjusted estimates may not be reliable indicators of trend behaviour.

3 The smoothing of seasonally adjusted series reduces the impact of the irregular components of the seasonally adjusted series and creates trend estimates. These trend estimates are derived by applying a 13-term Henderson-weighted moving average to all months except the last six. The last six monthly trend estimates are obtained by applying surrogates of the Henderson average to the seasonally adjusted series. Trend series are used to analyse the underlying behaviour of the series over time.

4 While this smoothing technique enables estimates to be produced for the latest month, it does result in revisions to the most recent months as additional observations become available. Generally, subsequent revisions become smaller and after 3 months have a negligible impact on the series. Revisions also occur as a result of the annual review of seasonal factors.

5 Users may wish to refer to the ABS Publication *A Guide to Interpreting Time Series – Monitoring ‘Trends’ – An Overview* (1348.0) for more detailed information on smoothing seasonally adjusted time series data.

RELATED PUBLICATIONS

6 Current publications produced by the ABS are listed in the *Catalogue of Publications and Products* (1101.0). The ABS also issues, on Tuesdays and Fridays, the *Release Advice* (1105.0) which lists publications to be released in the next few days. The *Catalogue* and *Release Advice* are available from any ABS office.

UNPUBLISHED STATISTICS

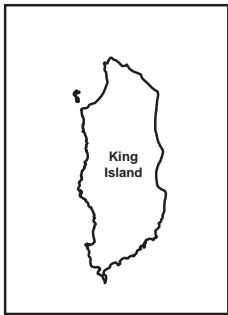
7 As well as the statistics included in this and related publications, the ABS may have other relevant unpublished data available. Inquiries should be made to Information Inquiries on (03) 6222 5800 or to any ABS office.

EFFECTS OF ROUNDING

8 Some figures have been rounded and discrepancies may occur between totals and sums of the component items.

SYMBOLS AND OTHER USAGES

n.a.	not available
n.y.a.	not yet available
..	not applicable
—	nil or rounded to zero
p	preliminary—figure or series subject to revision
r	figure or series revised since previous issue



Statistical Divisions



Statistical Division NORTHERN
 Local Government Area Dorset



Based on ASGC 1996
 Prepared by: Demography Section, ABS Hobart
 © Commonwealth of Australia, 1998

SELF-HELP ACCESS TO STATISTICS

PHONE Call 1900 986 400 for the latest statistics on CPI, Labour Force, Earnings, National Accounts, Balance of Payments and other topics. (Call cost is 75c per minute)

INTERNET <http://www.abs.gov.au>

LIBRARY A range of ABS publications is available from public and tertiary libraries Australia wide. Contact your nearest library to determine whether it has the ABS statistics you require.

WHY NOT SUBSCRIBE?

PHONE +61 1300 366 323

FAX +61 3 9615 7848

CONTACTING THE ABS

ABS provides a range of services, including: a telephone inquiry service; information consultancy tailored to your needs; survey, sample and questionnaire design; survey evaluation and methodological reviews; and statistical training.

<i>INQUIRIES</i>	<i>By phone</i>	<i>By fax</i>
Canberra	02 6252 6627	02 6253 1404
Sydney	02 9268 4611	02 9268 4668
Melbourne	03 9615 7755	03 9615 7798
Brisbane	07 3222 6351	07 3222 8283
Perth	08 9360 5140	08 9360 5955
Adelaide	08 8237 7400	08 8237 7566
Hobart	03 6222 5800	03 6222 5995
Darwin	08 8943 2111	08 8981 1218

POST Client Services, ABS, PO Box 10, Belconnen, ACT 2616

EMAIL client.services@abs.gov.au

